

# Knepp Wildland Campsite

## Granary & overflow car park directions



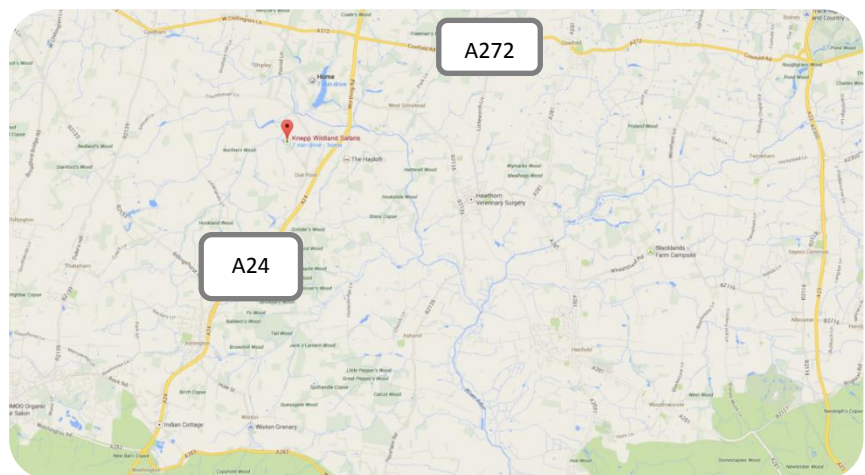
**Address:** The Cow Barn, Knepp Safaris, New Barn Farm, Swallows Lane, Dial Post, West Sussex, RH13 8NN.

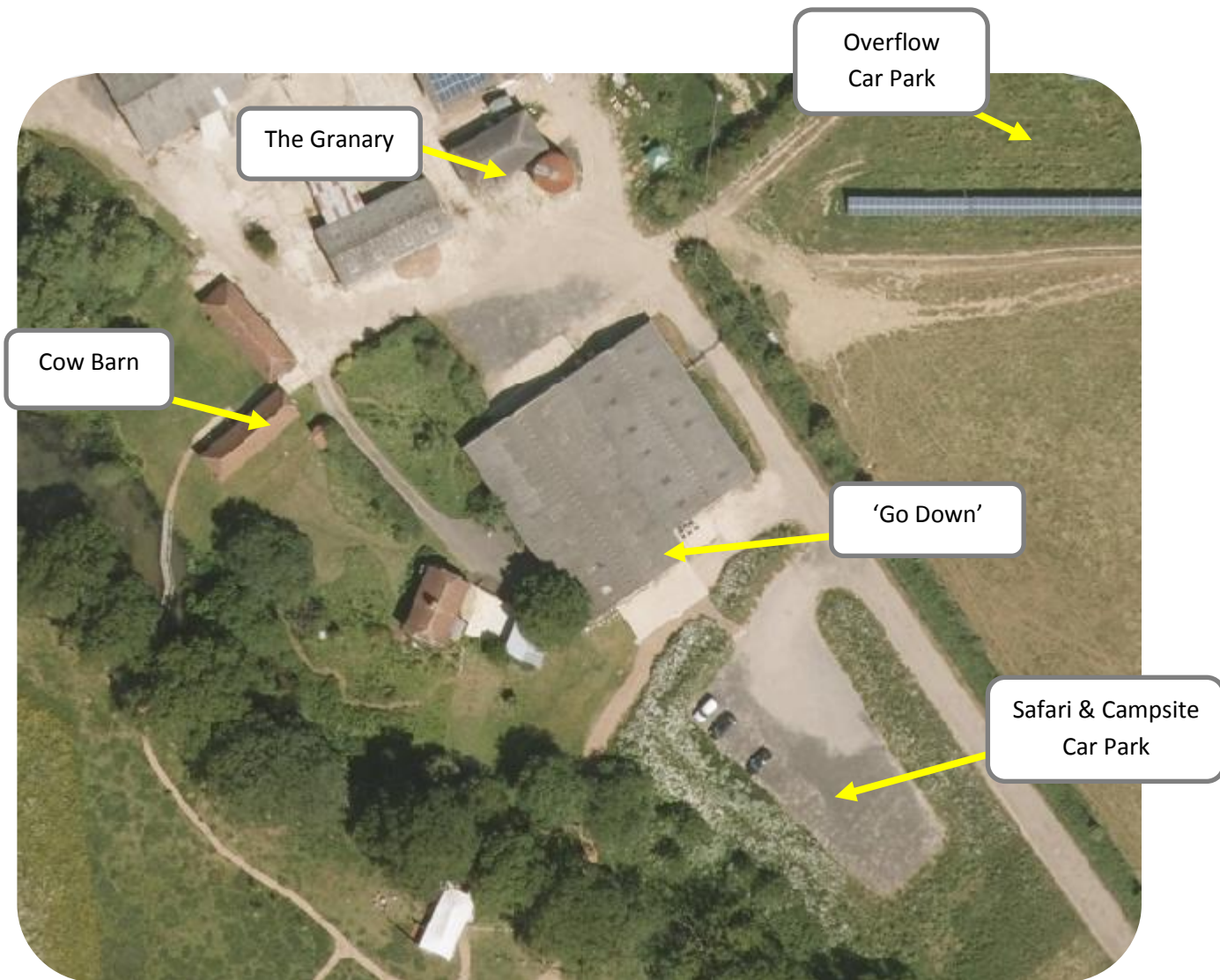
**OS grid reference:** TQ150204

Parking is free in the Car Park at New Barn Farm. No dogs please.

The campsite is down a long track, which is accessed via Swallows Lane, just next to the village of Dial Post. Please be aware that if using a sat nav the postcode may take you further along Swallows Lane. The track you are looking for is just to the north of Dial Post. For the overflow car park come all the way to the end of the track, pass the camping car park on your left, go through an automatic wooden gate, then turn right (signposted overflow car park).

**If you have queries or are delayed on the day please call 01403 713230 or 07872 691075.**





The Granary

Overflow  
Car Park

Cow Barn

'Go Down'

Safari & Campsite  
Car Park